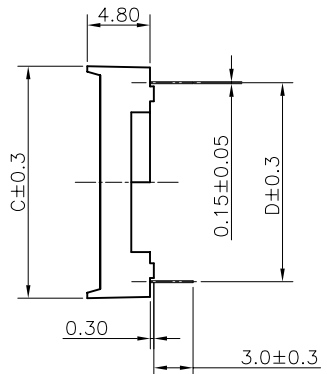
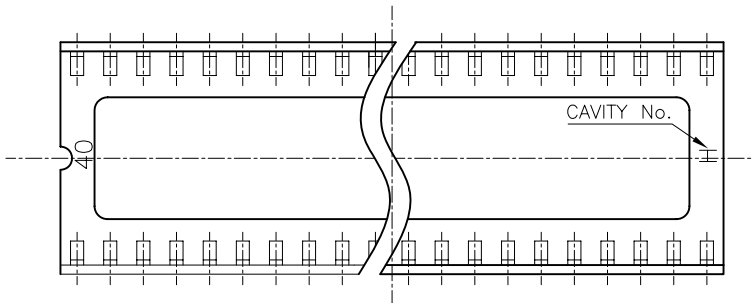


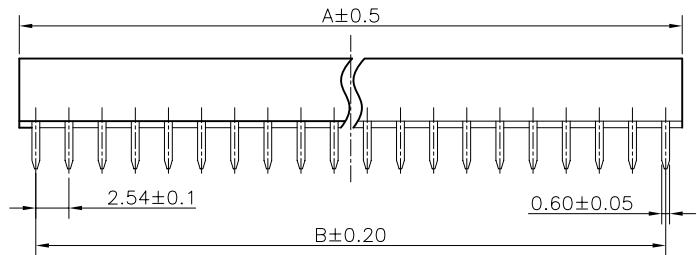
REV.	DESCRIPTION	DRAWN	CHECKED	APPROVED
A	NEW RELEASE	LJH 09/28/05'	~	LJC 09/28/05'
B	ADD W/ Kink Figure	LL 11/04/06'	~	LJC 11/04/06'
C	ADD P/N Code	LJC 12/10/13'		



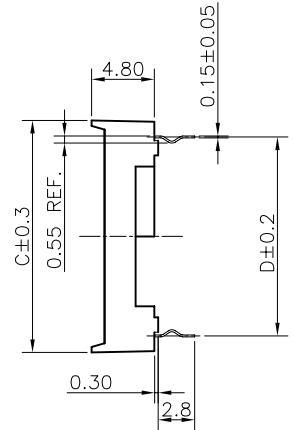
- NOTES:
- ELECTRICAL CHARACTERISTICS:
    - CONTACT RESISTANCE: 20mΩ Max.
    - DIELECTRIC WITHSTANDING VOLTAGE: 500V AC(rms) FOR 1 MINUTE.
    - INSULATION RESISTANCE: 1000MΩ Min.
  - ENVIRONMENT CHARACTERISTICS:
    - TEMPERATURE: -20°C~+105°C.
  - PRODUCT NUMBER CODE:
 

DS1009 - X X X X X - X X X


    - Packing Type(Box): ②
      - 2: 2 inner box/outer box
      - 4: 4 inner box/outer box
      - 6: 6 inner box/outer box
    - Product Packing Type: ③
      - A: Tube + Plastic Nail
      - B: Tube + Rubber
      - C: Foam Board
    - Housing Material: ④
      - 0: PBT UL94 V-0
      - 2: PBT UL94 HB
    - Central support
      - S: W/ central support
      - X: W/O centrsupport
    - Width(DIM D)
      - N: 7.62mm(06~28p)
      - W: 15.24mm(24~482p)
    - Contact plating
      - T1: Tin
    - Contact type
      - A: W/O kink
      - B: W/ kink
    - No.OF CONTACTS
      - 06 08 14 16 18 20
      - 24 28 32 40 42



Position	Dimension			
	A	B	C	D
06	7.62	5.08	10.16	7.62
08	10.16	7.62	10.16	7.62
14	17.78	15.24	10.16	7.62
16	20.32	17.78	10.16	7.62
18	22.86	20.32	10.16	7.62
20	25.40	22.86	10.16	7.62
24	30.48	27.94	10.16	7.62
24	30.48	27.94	17.78	15.24
28	35.56	33.02	10.16	7.62
28	35.56	33.02	17.78	15.24
32	40.64	38.10	17.78	15.24
40	50.80	48.26	17.78	15.24
42	53.34	51.00	17.78	15.24



Ⓑ W/ Kink Figure

GENERAL TOLERANCE	ANGLE TOLERANCE	PROJECTION	TITLE	2.54mm IC SOCKET Stamping Type		
X. ±0.60	X. ±5°	UNITS	mm			
.X ±0.38	.X ±3°	SHEET SIZE	A4	SERIES	DS1009 SERIES	
.XX ±0.25	.XX ±2°	 <b>晨翔电子有限公司</b> <b>CONNFLY ELECTRONIC CO., LTD</b>				
DRAWING TYPE	CUSTOMER					
SCALE	1:1					SHEET
DRAWING NO.	C-DS1009-XXXXX-XXX-C					