

### RATING

- 10A 125/250VAC (UL, CUL)
- 13A 125VAC, 10A 250VAC, 1/2HP 125/250 VAC (CSA)
- 10(4)A~250VAC T85 (FIMKO ENEC)
- Initial contact resistance: 20m Ohms max
- Insulation resistance: 100M Ohms min. at 500VDC
- Dielectric strength: 1000 VAC (UL), 3000VAC (Fimko) 1min
- Electrical life: 6000 (UL); 10000 (Fimko) cycles

### FEATURES

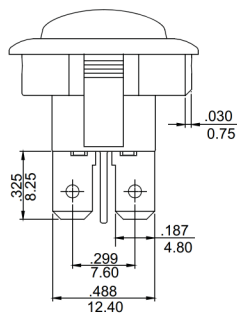
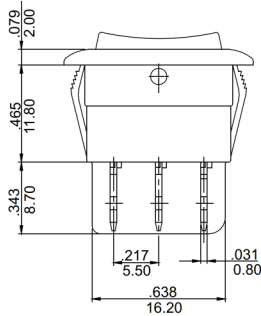
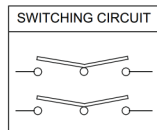
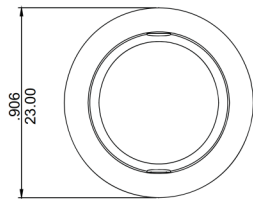
- Safety approved internationally by UL, CUL & CSA in North America, FIMKO & ENEC in Europe.
- SPST, SPDT, DPST, DPDT
- Standard dia. 20mm round snap-in cutout size
- Quick-connect and solder terminals
- Waterproof cover boot as optional accessory

MR3 — 2 3 0 — R 2 — B B X

SERIES SYMBOL	POLE	FUNCTION	TERMINAL TYPE	ACTUATOR TYPE	MARKING TYPE	BASE COLOR	ACTUATOR COLOR	SUFFIXES
MR3 SERIES	1 SINGLE POLE 2 DOUBLE POLE	1 ON-OFF 2 ON-ON 3 ON-OFF-ON	0 QUICK CONNECT 1 SOLDER TERMINAL	R ROUND	1 HI LO 2 NO MARKING 3 ON OFF 4 ○   5 ○ —	B BLACK W WHITE A GRAY	B BLACK A GRAY W WHITE R RED	BLANK NUMBER OR LETTERS

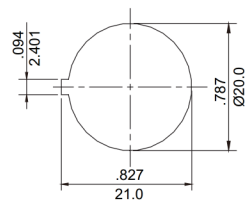
#### Note:

1. The products options may be too many to be listed fully above. kindly consult our sales directly for more information
2. Suffixes (X): Custom code.



#### PANEL CUT-OUT

Snap-in mounting



MR3-230-R2-XXX

